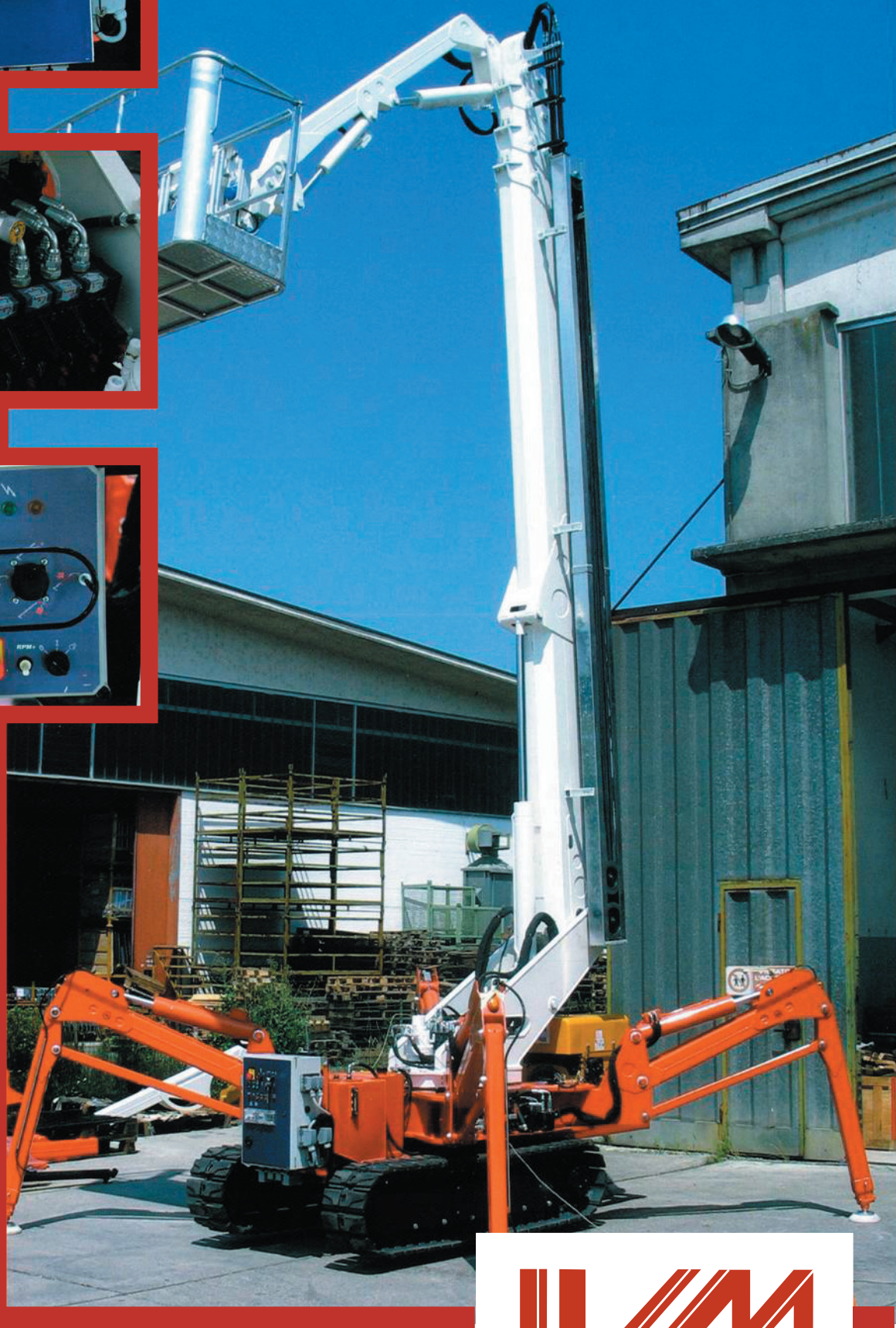


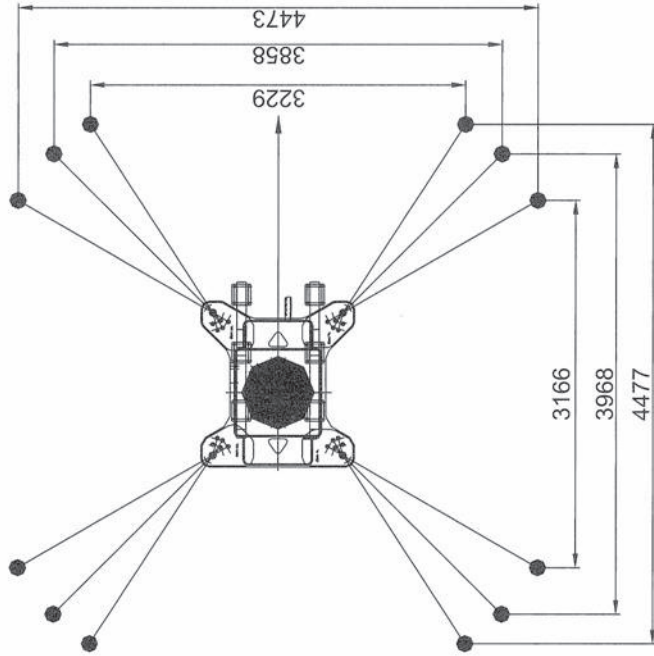
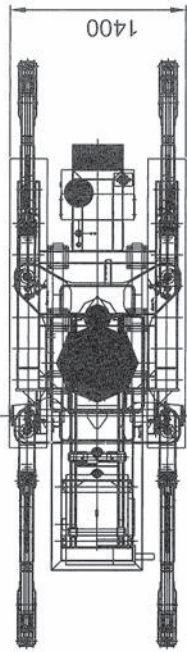
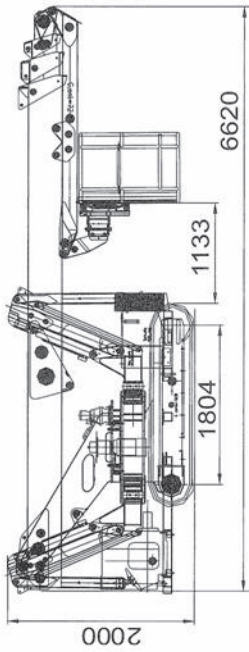
**R 260**



**RAGNO  
SPIDER**

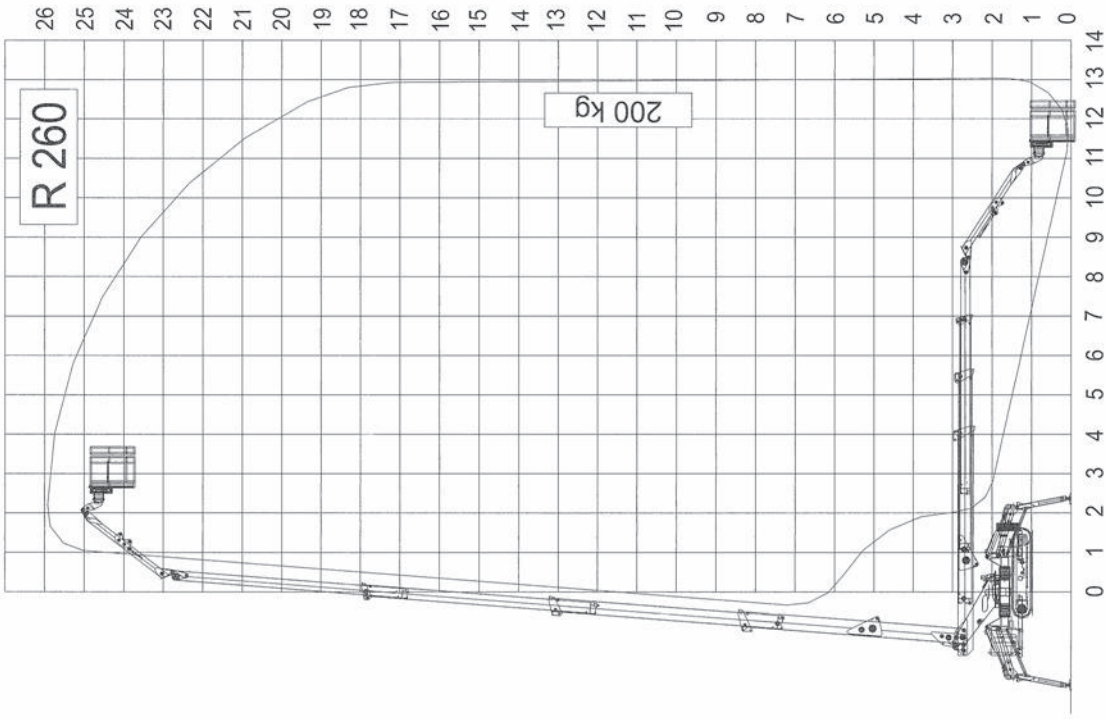
[www.lvmnacelle.com](http://www.lvmnacelle.com)





Dati e descrizioni sono forniti a titolo indicativo e non impegnativo  
 Data and descriptions are approximate and not binding  
 Toutes les données et descriptions sont fournies à titre indicatif,  
 sans engagement - Angaben und beschreibungen sind nicht verbindlich  
 Los datos y las descripciones son suministrados indicativamente  
 y sin compromiso.

I	-Altezza massima di lavoro -Sbraccio massimo di lavoro -Rotazione torretta -Portata massima -Movimenti idraulici proporzionali -Massa totale -Pendenza superabile -Dim. cestello	26.00 m 13 m 360° non continui 200 kg 4800 kg 30% 2,0 x 0,7 m
UK	-Max. working height -Max. working outreach -Turret rotation -Max. capacity -Proportional hydraulic controls -Total weight -Gradeability	26.00 m 13 m 360° not continuous 200 kg 4800 kg 30% 2,0 x 0,7 m
E	-Altura de trabajo -Alcance lateral máx -Giro de la torre -Carga max en plataforma -Mandos proporcionales -Peso total -Pendiente máx -Dimensiones de plataforma	26.00 m 13 m 360° no continua 200 Kg 4800 Kg 30% 2,0 x 0,7 m
F	-Hauteur de travail -Déport max laterale -Rotation tourelle -Max charge dans le panier -Commandes proportionnelles -Poids total -Max pente admissible -Dimensions panier	26.00 m 13 m 360° no continue 200 Kg 4800 Kg 30% 2,0 x 0,7 m
D	-Max. Arbeitshöhe -Max. Arbeitsauslegung -Drehturm rotation -Max. Tragkraft -Steuerungen hydraulische -Gewicht -Max. Steigfähigkeit -Korbabmess.	26.00 m 13 m 360° no endlos 200 Kg 4800 Kg 30% 2,0 x 0,7 m



**DISTRIBUTORE/DISTRIBUTOR**